

Notes:

Complete User Manual at: RCACommunicationsSystems.com

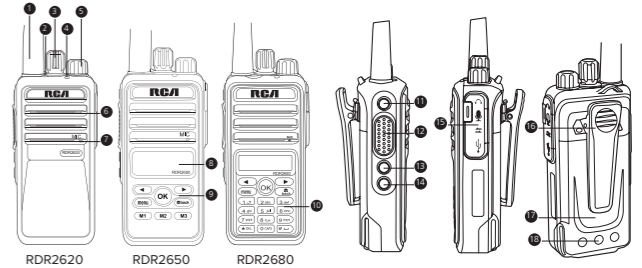
Complete User Manual at: RCACommunicationsSystems.com



RDR26x0 Series Digital Radios

QUICK START GUIDE

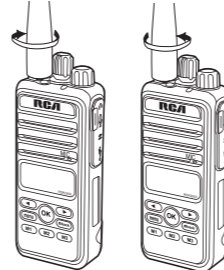
What's Included:



Product Overview

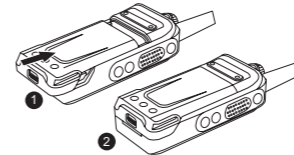
- 1 Antenna
- 2 Top Button (Programmable)
- 3 Channel Knob
- 4 LED Indicator
- 5 On/Off/Volume Knob
- 6 Speaker
- 7 Microphone
- 8 Display (RDR2650 / RDR2680)
- 9 Limited Keypad (RDR2650)
- 10 Full Keypad (RDR2680)
- 11 Side Button 1 (Programmable)
- 12 Push-To-Talk Button (PTT)
- 13 Side Button 2 (Programmable)
- 14 Side Button 3 (Programmable)
- 15 Accessory Connector
- 16 Screw-On Belt Clip
- 17 Battery
- 18 Battery Charging Contact Points

Attaching the Antenna:



1. Turn the antenna clockwise to attach it.
 Note: To remove the antenna, rotate it counter-clockwise.

Attaching the Battery:



1. Place the battery on the back of the radio, line up battery guide slots. (See 1)
2. Slide battery upward into place until it snaps into place. (See 2)

Note: If the battery is not securely locked, remove it and reattach it.

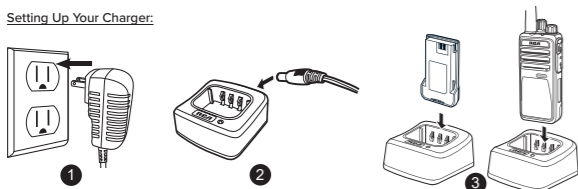


www.rcacommunicationssystem.com
products@rcacommunicationssystem.com
 (877) 822-2915

Communications Systems Created in U.S.A.

RCA and the RCA logo are trademarks of Technicolor SA and are used under license. All other trademarks are the property of their respective owners. © 2020 RCA Communications Systems. All rights reserved.

Setting Up Your Charger:



1. Plug the adapter's AC connector into the AC outlet socket. (see 1)
2. Plug the adapter's DC connector into the DC socket on the back of the charger. (see 2)
3. Place the radio with the battery attached, or the battery alone, in the charger. (see 3)
4. Make sure the battery contact is touching the charging terminals. The charging process begins when the red LED light illuminates.
5. The green LED light will illuminate approximately two hours later, indicating the battery is fully charged.

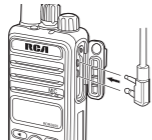
Attaching/Removing Belt Clip:



Using a small screwdriver, align the belt clip's screw holes to the radio's chassis. Attach by turning the screws clockwise into the belt clip's screw holes. Remove by doing the reverse.

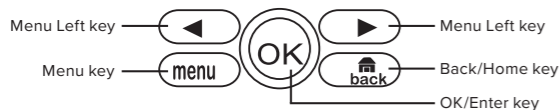
- ATTENTION:**
- Remove battery for easy installation
 - Do not use power tools, only screwdriver

Attaching audio accessory:



The accessory connector is located on the side of the radio. It is used to connect RCA audio accessories to the radio. Remove the accessory cover by unscrewing the screw location at the bottom of the cover. Connect the desired audio accessory firmly into the accessory jack and secure the screw by turning it clockwise. **NOTE:** Please loosen the screw prior to removing the audio accessory. The use of the audio accessory may affect the waterproof performance of the radio.

Function Keypad (RDR2550/RDR2600 model)



Programmable Keys

[P1] key, [P2] key, [P3] key, and Top Button, can be set as function or menu shortcut keys by your RCA dealer. The function keypad is to help navigate the on-screen menu of RDR2650 or RDR2680.

Basic Operations

Turning on/off radio

Rotate the Radio On-Off/Volume knob clockwise / counter-clockwise until a click is heard to turn on/off the radio.

Adjust the volume

After turning the radio on, rotate the Radio On-Off/Volume knob clockwise to increase the volume or counter-clockwise to decrease the volume.

Selecting a channel

Locate the channel number on the Channel Knob rotate it to select the desired channel. While rotating the knob, there is an automated channel number Voice prompt.

Mode Switch

Through Channel Selector knob. Each channel of the radio can be set as analog channel or digital channel by the dealer. The user can set them up through CPS software.

Call

Group Call

Talk group can be set by the dealer in advance and the operation methods are the same under DMO mode and TMO mode.

Transmitting a group call

1. Select the desired talk group through Channel Knob.
2. Hold down [PTT] key to transmit a group call.

Receiving and replying a group call

You can receive the group call without any key operation. If reply is needed, please hold down [PTT] key after the speech of the other side and then speak to microphone.

Care and Cleaning

To guarantee optimal performance as well as a long service life of your radio, please follow the tips below.

Radio Care

Keep the radio far away from substances that can corrode the electronic circuit.

Do not hold the radio by its antenna or headset cable directly to prevent damage to its normal use.

Attach the accessory jack cover when the radio is not in use.

Radio Cleaning

Clean up the dust and fine particles on the radio surface and charging piece with a clean and dry lint-free cloth or a brush regularly.

Use neutral cleanser and a non-woven fabric to clean the keys, control knobs and front case after long-time use. Do not use chemical preparations such as stain removers, alcohol, sprays or oil preparations, so as to avoid surface case damage. Make sure that the radio is completely dry before use.

NOTE: Turn off the radio and remove the battery before cleaning.

Battery indicator

Battery Usage Status	Audio Indication (RDR2500 model)	Display Indication (RDR2550/RDR2600)
Power ≥ 80%	3 Beeps	
Power ≥ 40%	2 Beeps	
Power ≤ 40%	1 Beep	
Power ≤ 10%	Low Battery Beep Warning	

Charger LED indicator

LED Indication	Charging Status
LED Glows Red	Charging
LED Glows Green	Fully Charged

Radio LED indicator

LED Indication	Radio Status
Blinking Red	Radio is scanning, Radio is transmitting at low battery condition, receiving an emergency transmission or has failed the self-test upon powering up.
Solid Red	Radio is transmitting.
Blinking Green	Radio is powering up.
Solid Green	Radio is receiving or carrier is present/busy channel.
Rapidly Blinking Green	Radio is receiving a privacy-enabled call or data.

NOTE: When the LED is solid green, it indicates the radio detects activity over the air. Due to the nature of the digital protocol, this activity may or may not affect the radio's programmed channel.

LCD Icon / STATUS INDICATION IN RADIO (RDR2550/RDR2600 model)

Icon Name	Icon	Radio Status
Battery Charge		The number of bars (0 - 4) shown indicates the charge remaining in the battery. Icon blinks when the battery is low.
Received Signal Strength Indicator (RSSI)		The number of bars displayed represents the radio signal strength and is only displayed while the radio is in receiving mode.
Message Icons		New message/unread message
		Inbox is full
		Sent successfully
		Send failed
		Send in-progress
Call Icons		Private Call
		Group Call/All Call
Power Icons	L or H	Radio is set at low power (L) or high power (H)
Scan Icons		Scan feature is enabled
		Priority scan detects activity on channel/group designated as Priority 1 (if • is blinking) or Priority 2 (if • is steady)
Monitor		Selected channel is being monitored
Tones Disable		Tones are turned off
Emergency Icon		Radio is in Emergency mode
Privacy Icon		The Privacy feature is enabled
Talkaround Icon		The radio is currently configured for direct radio to radio communication.